

HEALTH & HYGIENE

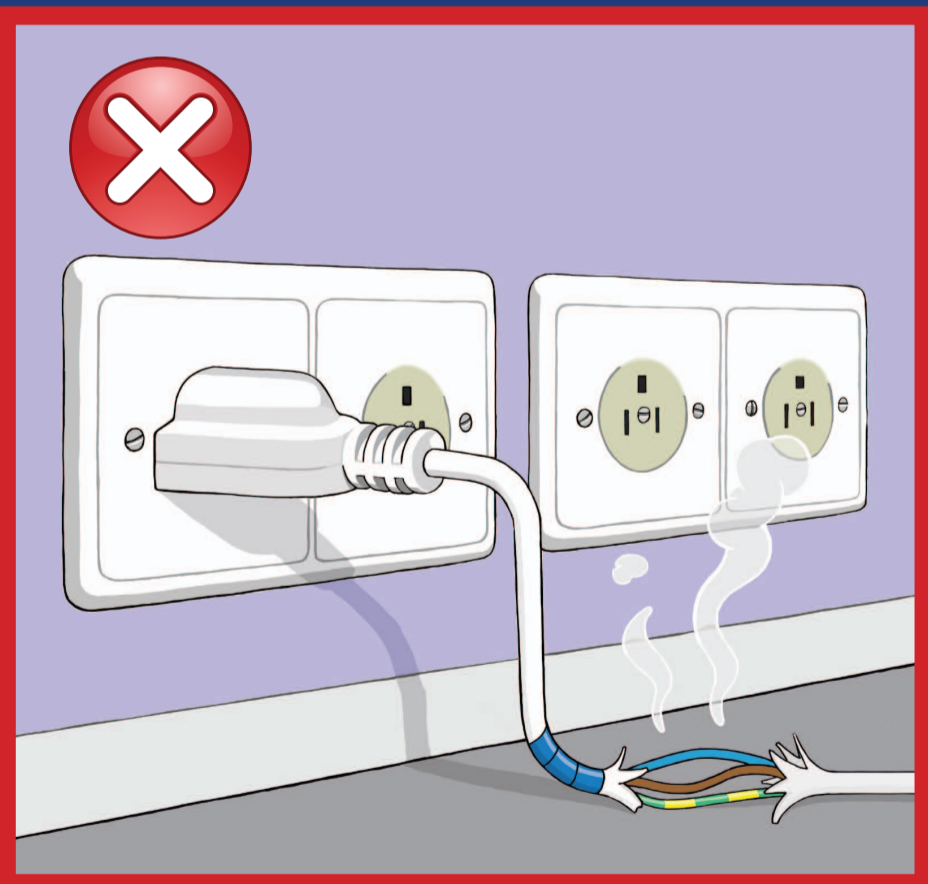
GALLEY HEALTH AND SAFETY



Never leave plastic containers on or near a hot stove.



First switch off power, always use an appropriate extinguisher or fire blanket subject to fire types.



Always check and ensure electrical appliances have good and safe electrical leads.



Never leave loose garments or drying cloths close to a hot stove or any sources of heat.

